

Assise TIPPY GAP R-136



Description

Assise en ciment hydrofugé (ciment certifié eco operando). Le ciment certifié eco operando émet 35% d'émissions de CO2 en moins que le ciment ordinaire. Agrégats marbre ou carrière concassée.

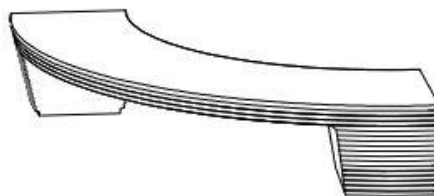
Dimensions

Hauteur assise : 46cm

Longueur 279 cm

Poids

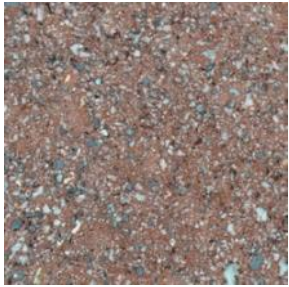
720 kg



Les options

Autres coloris (nous consulter, augmentation en fonction de la couleur. *Demander un devis.*)

Couleurs de finition



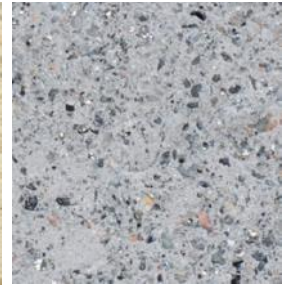
Marron



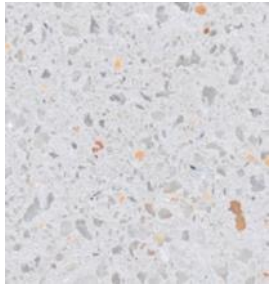
Noir



Ocre



Gris



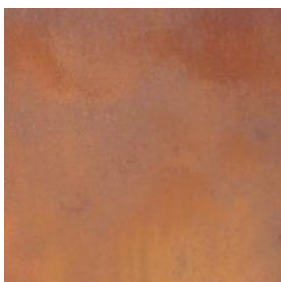
Blanc

Coloris optionnels



Finition de surface

Revêtements composés de liants qui intègrent des charges de métal concassé et donnent aux éléments urbains l'apparence réelle du métal ainsi que son oxydation et ne se détériorent pas avec le temps.



Corten



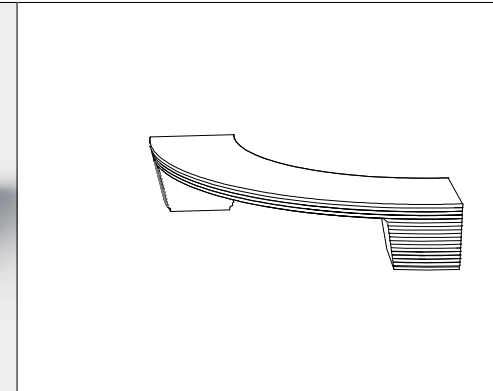
Noir graphite

CARACTERISTICAS / FEATURES



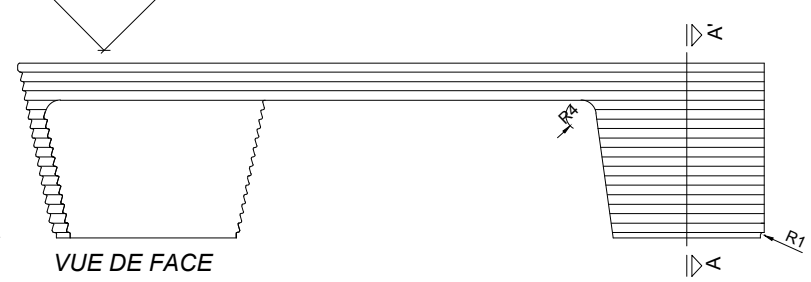
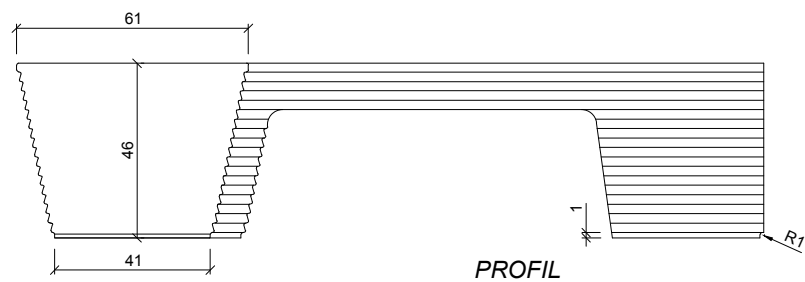
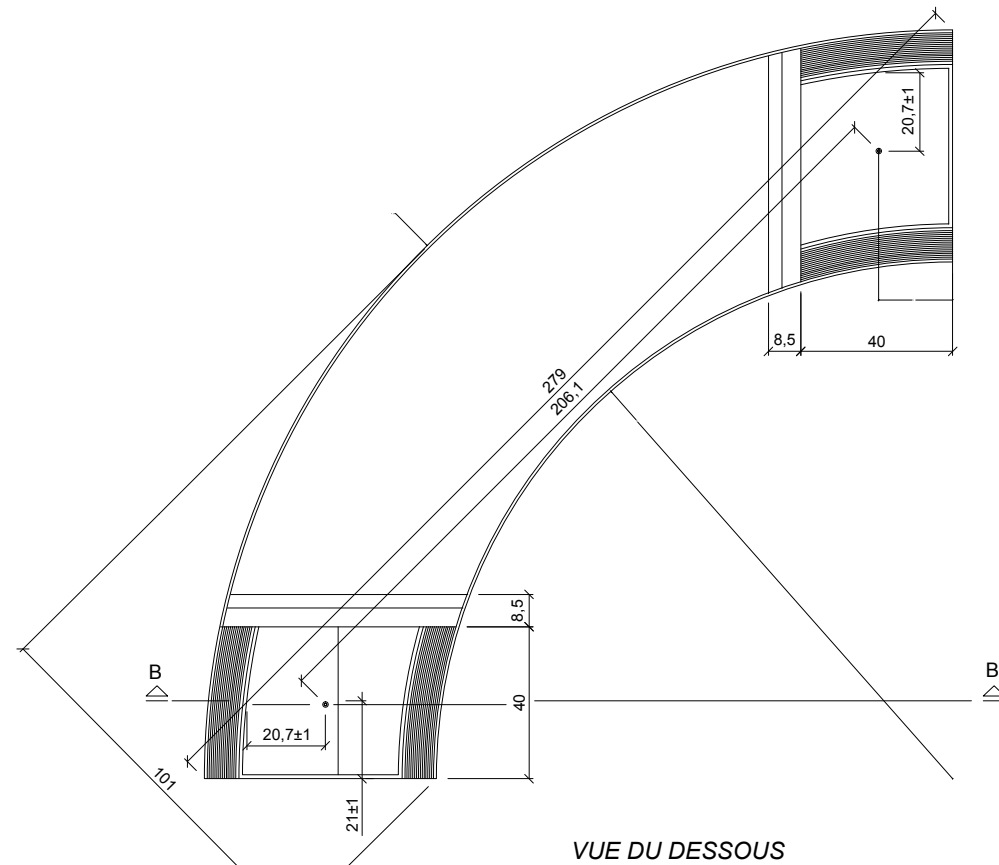
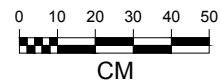
Matière béton préfabriqué Petra 1
Finition gravé et imperméabilisé
Dimensions l. 279 w. 101, h. 46 cm
Couleur Sur la fiche technique
Fixation reposant au sol ou avec de la résine époxy
Poids 720 Kg
Palette 300 x 110 cm

Dessinateur: Ton Riera



TIPPY GAP R136

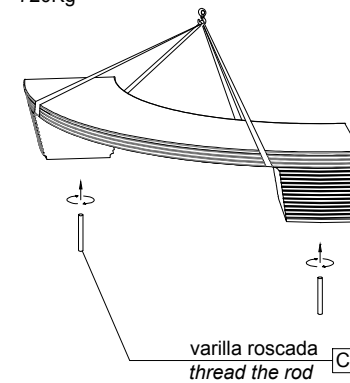
GEOMETRIE



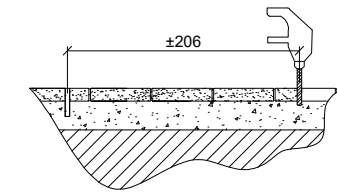
MANIPULACIÓN E INSTALACIÓN / HANDLING AND INSTALLATION

1 enroscar la varilla / thread the rod

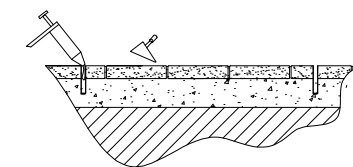
elevación / hoisting
P= 720Kg



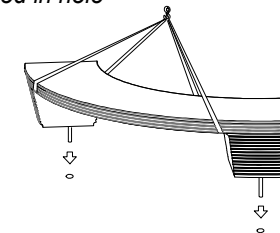
2 perforar 2 agujeros Ø24 a distancia 206 cm
drill 2 holes Ø24 each at a distance ± 206 cm



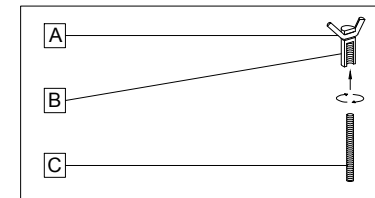
3 verter resina epoxy / pour resin epoxy



4 insertar la varilla en el agujero
insert metal rod in hole

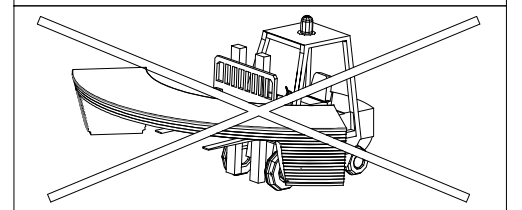


SISTEMA DE FIJACIÓN / ANCHORAGE SYSTEM



- A barra corrugada / corrugated rod
- B casquillo roscado / thread sleeve
- C varilla roscada / thread the rod

ATENCIÓN!!!! no usar pala elevadora para la manipulación
ATTENTION!!! shouldn't use Forklift for handling



SPECIFICATIONS

