

## Jardinière DISH



### Description

Assise en ciment hydrofugé ( ciment certifié eco operando). Le ciment certifié eco operando émet 35% d'émissions de CO2 en moins que le ciment ordinaire. Agrégats marbre ou carrière concassée.

### Dimensions

Hauteur : 47 cm

Diamètre : Ø150cm

Capacité : 532 L

### Poids

931 kg

### Les options

Autres coloris (nous consulter, augmentation en fonction de la couleur. *Demander un devis.* )

## Couleurs de finition



Marron



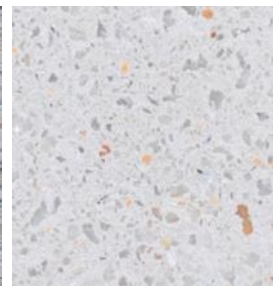
Noir



Ocre



Gris



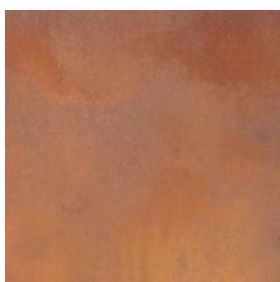
Blanc

## Finition de surface

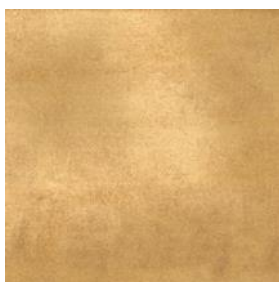
Revêtements composés de liants qui intègrent des charges de métal concassé et donnent aux éléments urbains l'apparence réelle du métal ainsi que son oxydation et ne se détériorent pas avec le temps.



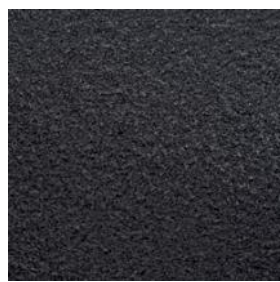
Bronze



Corten



Golden



Noir graphite



precast concrete preta 1  
scaled and waterproofed  
l. Ø190, h. 47 cm  
see colour catalogue  
resting on the ground  
931 Kg / 335 L  
200 x 200 x 65 cm  
950 Kg

Material  
Finish  
Dimensions  
Colour  
Fixing  
Weight / Capacity  
Package  
Weight package

diseñador / design: Gaudío Marsalle

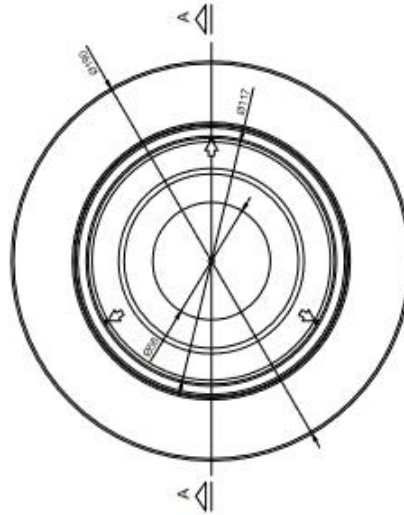
**CARACTERÍSTICAS / FEATURES**

Material  
Acabado  
Dimensiones  
Color  
Fijación  
Peso / Capacidad  
Bulto  
Peso bulto

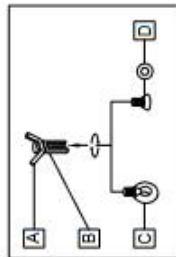
hormigón piedra 1  
decapado e hidrofugado  
l. Ø190, h. 47 cm  
ver carta de colores  
simplemente apoyado  
931 Kg / 335 L  
200 x 200 x 65 cm  
950 Kg

**GEOMETRIA / GEOMETRY**

A ubicación del casquillo roscado  
location of steel socket threaded



- A barra corrugada / corrugated rod
- B casquillo roscado / threaded sleeve
- C cáncamo / eyebolt
- D tapa / stopper
- E varilla roscada / thread the rod

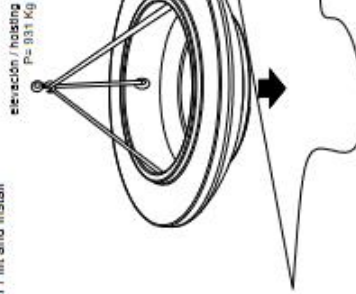


**MANIPULACIÓN E INSTALACIÓN / HANDLING AND INSTALLATION**

- 1 extraer tapas / extract stoppers
- 2 enrosacar cáncamo / thread the eyebolt



- 3 elevar e instalar / lift and install

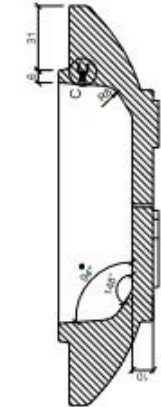


**ESPECIFICACIONES / SPECIFICATIONS**

Tubo acero zincado M16 - Inox  
Galvanized steel threaded sleeve M16 high precision

Tubo acero zincado M16 alta precisión  
Galvanized steel threaded sleeve M16 high precision

Barra corrugada acero negro 06S - REAS  
Corrugated rod black steel 06S - REAS



DETALLE C / DETAIL C