

Assise CONFETI



Description

Assise en ciment hydrofugé (ciment certifié eco operando). Le ciment certifié eco operando émet 35% d'émissions de CO2 en moins que le ciment ordinaire. Agrégats marbre ou carrière concassée.

Dimensions

Diamètre : 88 cm

Hauteur : 41 cm

Poids

425 kg

Les options

Autres coloris (nous consulter, augmentation en fonction de la couleur. *Demander un devis.*)

Couleurs de finition



Marron



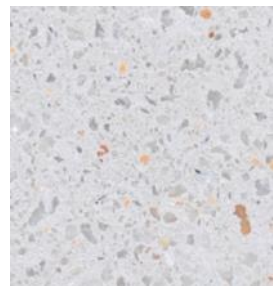
Noir



Ocre



Gris



Blanc

Finition de surface

Revêtements composés de liants qui intègrent des charges de métal concassé et donnent aux éléments urbains l'apparence réelle du métal ainsi que son oxydation et ne se détériorent pas avec le temps.



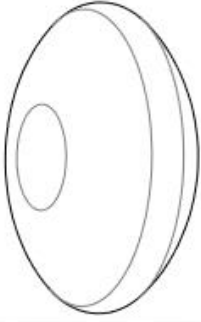
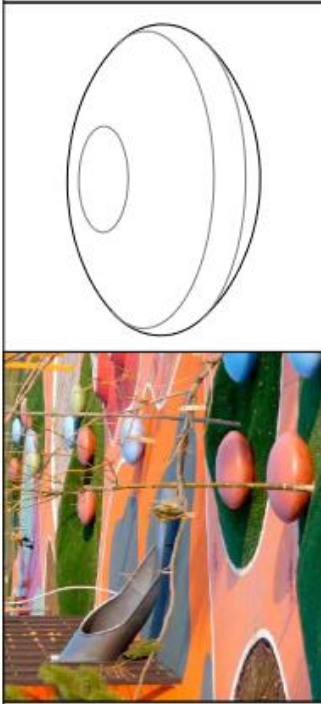
Corten



Noir graphite

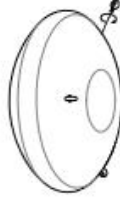
Couleurs en options





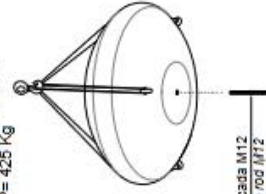
MANIPULACIÓN E INSTALACIÓN / HANDLING AND INSTALLATION

1 Enrosacar cáncamo
Thread the eyebolt

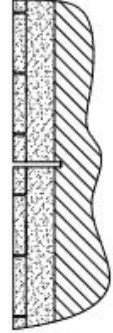


2 Elevar, enrosacar la varilla inferior y
insertar la varilla en el agujero con
resina epoxy
Lift, threaded the rod and insert
metal rod in hole with resin epoxy

Elevación / Hoisting
P= 425 Kg



Varilla roscada M12
Thread the rod M12

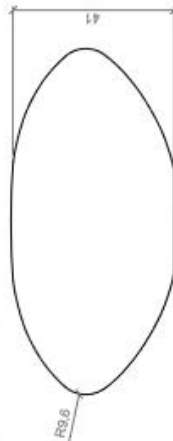


Material precast concrete Peira 1
Finish etched and waterproofed
Dimensions Ø88, h. 41 cm
Colour see colour catalogue
Fixing anchored with metal rod
Weight 425 Kg
Pallet 100 x 100 cm (1un)

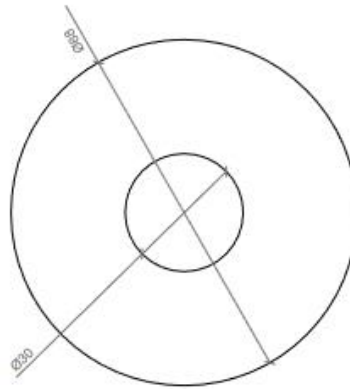
Material hormigón Peira 1
Acabado decapado e hidrofugado
Dimensiones Ø88, h. 41 cm
Color ver carta de colores
Fijación mediante varilla metálica
Peso 425 Kg
Palet 100 x 100 cm (1un)

diseñador / design: magourban

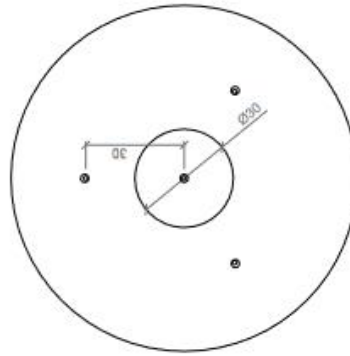
GEOMETRIA / GEOMETRY



ALZADO / FRONT VIEW



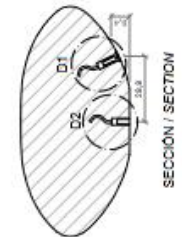
PLANTA / TOP VIEW



VISTA INFERIOR / BOTTOM VIEW

ESC. 1:10

ESPECIFICACIONES / SPECIFICATIONS



SECCIÓN / SECTION



DETALLE 1 / DETAIL 1



DETALLE 2 / DETAIL 2

Casquillo M12 - Tubo acero zincado alta precisión
Galvanized steel threaded sleeve high precision M12

Tomillo avellanado M12
Countersunk screw M12