



Support cycles PIN



Description

Supports cycles en béton hydrofugé (UHPC). Le ciment certifié eco operando émet 35% d'émissions de CO2 en moins que le ciment ordinaire. Agrégats marbre ou carrière concassée.

Dimensions

Hauteur hors sol : 900mm

Epaisseur : 60mm

Largeur 340mm

Poids

10 kg

Les options

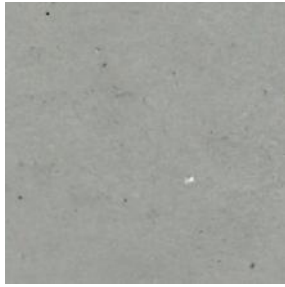
Autres coloris (nous consulter, augmentation en fonction de la couleur. *Demander un devis.*)



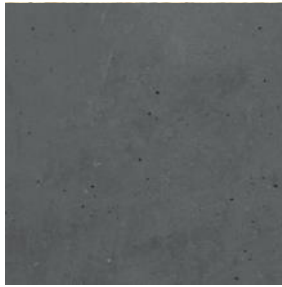
Couleurs de finition



Blanc



Gris



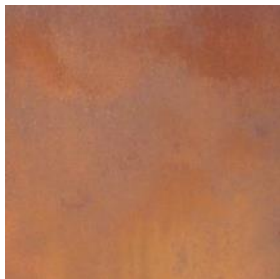
Noir

Finition de surface

Revêtements composés de liants qui intègrent des charges de métal concassé et donnent aux éléments urbains l'apparence réelle du métal ainsi que son oxydation et ne se détériorent pas avec le temps.



Bronze



Corten



Golden



Noir graphite

CARACTERÍSTICAS / FEATURES

Material GRC
Acabado liso
Dimensiones L. 34, a. 5, h. 90 cm
Color ver carta de colores
Fijación mediante varillas metálicas
Peso 10 Kg
Bulto 120 x 100 x 110 cm [20u / bulto]
Peso bulto 220 Kg

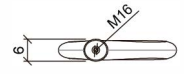
Material GRC
Finish smoth
Dimensions L. 34, a. 5, h. 90 cm
Colour see colour catalogue
Fixing with metal rod
Weight 10 Kg
Package 120 x 100 x 110 cm [20u / bulto]
Weight package 220 Kg

diseñador / design: CrousCalogero



PIN

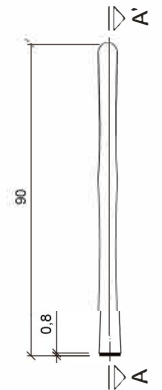
GEOMETRIA / GEOMETRY



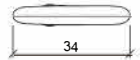
VISTA INFERIOR / BOTTOM VIEW



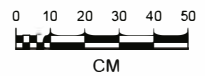
ALZADO / FRONT VIEW



PERFIL / PROFIL VIEW

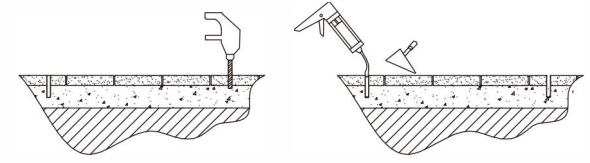


PLANTA / TOP VIEW

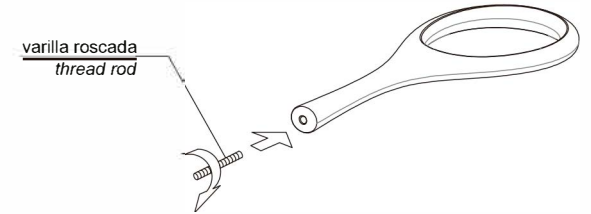


MANIPULACIÓN E INSTALACIÓN / HANDLING AND INSTALLATION

- 1 Perforar agujero y verter resina epoxy dentro
Drill hole and pour resin epoxy inside hole

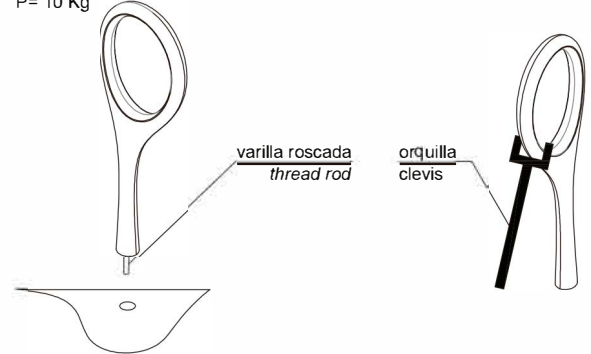


- 2 Posicionar la varilla roscada en el agujero central y apretar
Place the threaded rod into the center hole and tighten

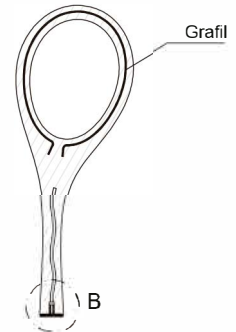


- 3 Insertar la varilla en el agujero e inmovilizar con orquilla durante el tiempo de secado de la resina epoxy
Insert thread rod into the hole and immobilize with the fork during the dry time of the epoxy resin.

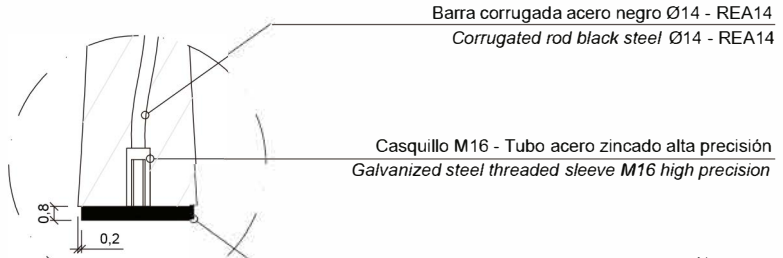
elevación / hoisting
 P= 10 Kg



ESPECIFICACIONES / SPECIFICATIONS



SECCIÓN A-A' / SECCIÓN A-A'



DETALLE B / DETAIL B

Barra corrugada acero negro Ø14 - REA14
Corrugated rod black steel Ø14 - REA14

Casquillo M16 - Tubo acero zincado alta precisión
Galvanized steel threaded sleeve M16 high precision

Neopreno
Neoprene